

MTT Shipping

Sustainability

Communication

Playbook 2023







Content

1. Message from our Group Executive Chairman	1
2. Our Vision, Mission and Core Values	2
3. Our Sustainability Overview	3
4. Our Approach to Sustainability	6
5. Our Roadmap to a Sustainable Future	24



Message From The Group Executive Chairman

As we navigate the complex waters of global trade and the modern business landscape, our responsibility extends beyond ensuring that efficient transportation of goods; it encompasses a profound commitment to protecting our planet. MTT Shipping stands firm in its commitment to responsible and sustainable practices. Our journey has always been guided by a vision of excellence, and today, we take another stride towards a greener, more equitable future.

Sustainability is not just a passing trend for us; it is a cornerstone of our identity. Our position in the market brings opportunity – and the obligation – to lead in environmental stewardship. We believe that responsible business practices are essential not only for the well-being of our environment, but also for the longevity and success of our organization. By prioritizing sustainability, we are investing in a legacy that goes beyond profits.

Our Sustainability Communication Playbook serves as a comprehensive guide, outlining our strategic approach to sustainability. It is a roadmap that aligns with our values and sets the course for how we conduct business responsibly, leaving a positive impact on both our community and the environment.

The Playbook zeroes in on critical focus areas, including safeguarding the environment, valuing our people and practicing robust governance. These pillars are not just aspirations; they are commitments that will shape our actions and decisions moving forward.

In the coming weeks, months and years, we will be rolling out initiatives and programs aligned with the Sustainability Communication Playbook. Thank you for your continuous support of our vision for our ESG commitment. We invite all our stakeholders to join us in shaping a more sustainable and responsible future.

Thank you very much.

Best Regards,

Dato' Seri Kenny Ong Kean Lee

Group Executive Chairman

MTT Shipping Sdn. Bhd.

Our Vision, Mission and Core Values

Vision



MTT Shipping aims to be distinguished as the leading shipping and logistics specialist with world class quality in the regional shipping industry through continuous improvements, technological advancements, and sustainable developments.

Mission



- Innovate continuously and exploit possibilities of latest technologies to cater to customers' needs;
- Build and sustain long-lasting partnerships based on integrity and shared ethical values;
- Ensure good governance by adhering to the highest standards of safety, quality and efficiency in shipping and logistics services;
- Contributing to the wellbeing of the environment, our people and society by upholding our commitment to sustainable developments.

Core Values



INNOVATE

INTEGRITY

TRANSPARENCY

SAFETY



Our Sustainability Overview

Our Sustainability Approach

MTT Shipping is cognisant that the operations of the shipping industry can have significant impacts on the environment and marine biodiversity of the locations in which it operates. In line with our vision and mission, we are determined to create long-term sustainable value for our stakeholders while staying committed to the sustainable development agenda. Hence, we want to play a part in contributing to the conservation and preservation of the environment and biodiversity, and the positive impact of the lives that we interact with.

In light of that, MTT Shipping has decided to embark on our sustainability journey and define the pathway ahead for our business. We have begun the journey by formalising and institutionalising the integration of sustainability consideration and practices throughout our shipping business. Moving

forward, our operations, actions and initiatives will be guided by our Sustainability Policy and ESG Framework to ensure that MTT Shipping walks the talk on becoming a distinguished and leading shipping and logistics specialist that places the interests of the environment, marine biodiversity and the society at par with the interest of the company.



Our Sustainability Highlights in 2022 – 2023

ENVIRONMENTAL

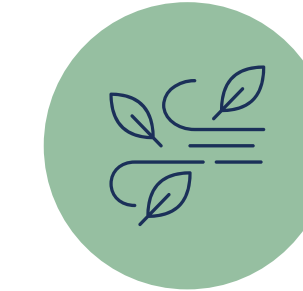


ENVIRONMENTAL COMPLIANCE

No cases of environmental non-compliance

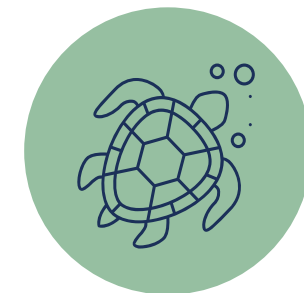


All container vessels are **IMO 2020 COMPLIANT**



REDUCE AIR POLLUTION

by acquiring 4 new vessels with scrubbers and maintaining low-sulphur fuel usage across all vessels with the exception of gas-powered ships



ZERO SPILLS

since beginning of operation



HSE PERFORMANCE

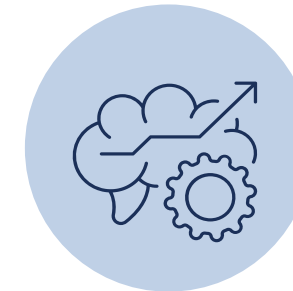
Zero fatalities since beginning of operation

SOCIAL



56.4% OF WOMEN IN WORKFORCE

with 12.8% in senior positions



31 TRAINING PROGRAMMES

Held in the financial year



Conducted **12 CSR PROGRAMMES**

GOVERNANCE



ZERO GRIEVANCES

received in the financial year



100% OF EMPLOYEES

have been communicated with ABC procedures



ZERO COMPLAINTS

concerning breaches of customer data since inception

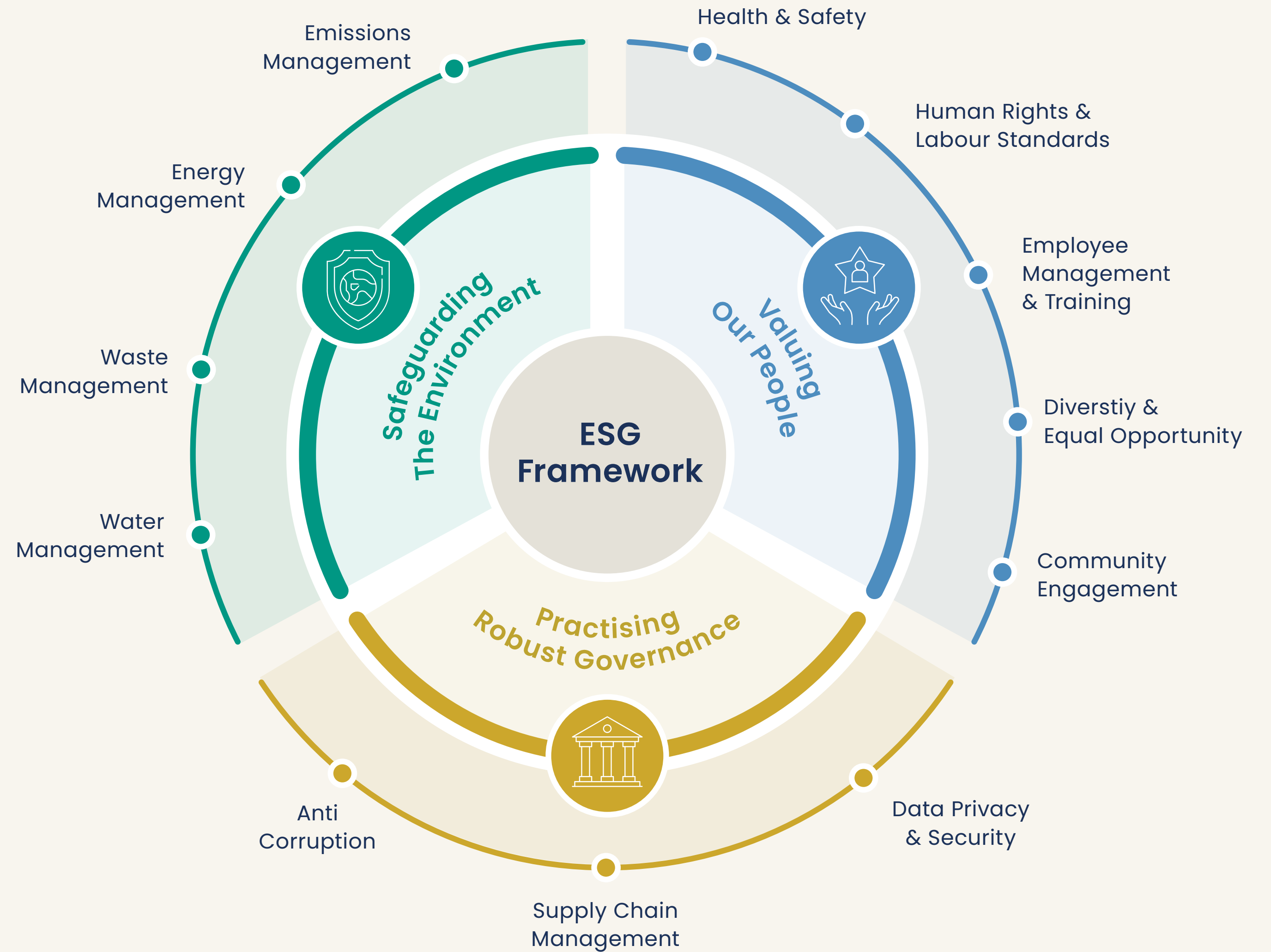


Our Approach to Sustainability

MTT Shipping
Sustainability Communication Playbook

Our ESG Framework

At MTT Shipping, we take great pride in our unwavering commitment to environmental, social and governance (ESG) principles. Our efforts extend across the ESG landscape and our promise is to continue integrating ESG principles into our core strategy, decision making and business operations, championing sustainability in all that we do. By doing so, we aim to not only achieve our own growth and success, but to also make a positive and lasting impact on the communities we serve and the environment we share.



Sustainability Governance

MTT Shipping is dedicated to embedding sustainability practices into our day-to-day operations. We believe that sustainability is a collective responsibility that should permeate every aspect of our organisation. Our approach revolves around the belief that sustainability is not merely a compliance measure, but a strategic imperative. As such, we have established an integrated sustainability governance structure with oversight from the Board of Directors.

- Has ultimate responsibility and oversight of sustainability
- Ensures sustainability is embedded in business strategies
- Approves sustainability strategies, including the materiality matrix

- Chaired by the CEO, and consists of key personnels from Corporate Affairs, CSR Committee, Finance, Health, Safety and Environment, Human Resource, Operations, Procurement and Risk Management.
- Manages, coordinates and oversees the implementation of sustainability initiatives
- Develops sustainability-related policies and procedures
- Consolidates ESG-related data and monitors performance

- Supports the Sustainability Committee in providing ESG-related data and day-to-day implementation of sustainability
- Participates in the materiality assessment process
- Provides feedback on sustainability-related policies and procedures



Our Sustainability – Related Policies

As we integrate sustainability into our business model, we have developed several sustainability-related policies to provide guidance, consistency, accountability, efficiency and clarity on how we operate.

HEALTH AND SAFETY POLICY



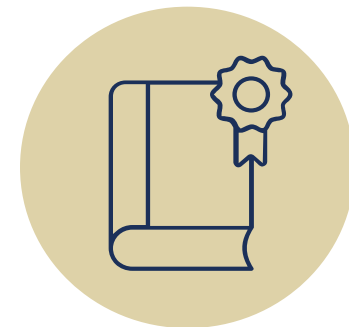
Demonstrates our commitment to eliminating hazards, reducing occupational health and safety risks, continual improvement of occupational health and safety management system, and ensuring that our practices attained a level that is achievable

EQUALITY AND DIVERSITY POLICY



Commitment to encouraging diversity and inclusion in the workplace, with the aim of creating a culture that values and respects each other's differences, promotes equality and diversity, and encourages individuals to grow and develop in order to realise their full potential.

EMPLOYEE CODE OF CONDUCT



Serves as a guidance on ethical workplace practices, and MTT Shipping's commitment in business dealings in a manner that is professional, fair and efficient.

SUPPLIER CODE OF CONDUCT



Highlights the general requirements and expectations applicable to all suppliers in procurement and business activities involving MTT Shipping – this includes health and safety, human rights and environmental protection.

ANTI-BRIBERY AND CORRUPTION POLICY



Sets out parameters to prevent the occurrence of bribery and corrupt practices within MTT Shipping. It also reiterates MTT Shipping's honest and transparent stand against bribery and corruption.

WHISTLEBLOWING POLICY



This policy establishes a formal and confidential channel to make reports in good faith, for instances of actual or suspected misconduct, violation of the Code of Conduct, illegal and unethical behaviour, and/or improper conducts.

Our Sustainability Priorities

The materiality assessment process

In 2023, we conducted our first materiality assessment to develop a high-level business-specific sustainability strategy. The process has been effective in helping us identify, navigate and prioritise material ESG issues applicable to MTT Shipping’s business operations and stakeholders. Firstly, a list of sustainability topics that were relevant to the shipping industry was shortlisted in reference to the sustainability standards below and the material ESG topics identified by MTT Shipping’s peers.

Topic Identification based on Sustainability Standards & Peers	
Chosen Standards & Frameworks	Rationale For Selection
GRI Standards	The most widely used and recognised sustainability standards globally, providing a comprehensive list of sustainability topics and indicators.
Bursa Malaysia	Given that MTT Shipping may consider to get publicly-listed, it is recommended to align with the prescribed list of Common Sustainability Matters that is a reporting requirement for all PLCs.
SEDG	Simplified list of sustainability topics and indicators for SMEs.
Peers	<ul style="list-style-type: none"> • Similar nature of business to MTT Shipping. • Industry leaders in the shipping business. • Comprehensive sustainability reporting and data available.

Our Sustainability Priorities

The materiality assessment process

The shortlisted sustainability topics were scored by MTT Shipping’s employees, representing the various stakeholder groups, and the management team to identify the relative importance of each material sustainability topic to MTT Shipping’s stakeholders and business operations.

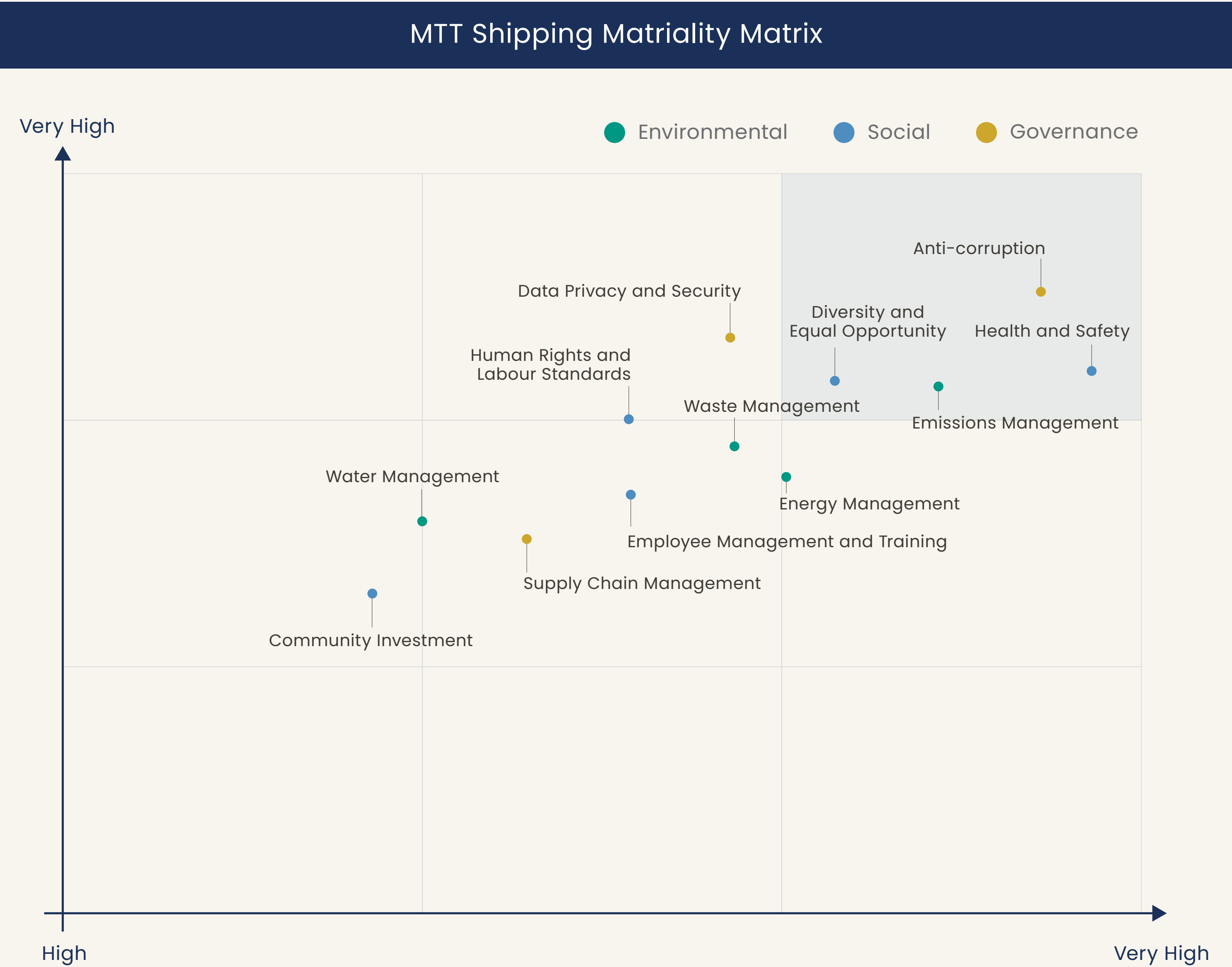
Topic Prioritisation by Stakeholder Groups	
Stakeholder Groups	Top 4 Material ESG Topics
 <p>Customers / Clients</p>	 <p>Emissions Management</p>
 <p>Investors / Shareholders / Financiers</p>	 <p>Health and Safety</p>
 <p>Employees</p>	 <p>Diversity and Equal Opportunity</p>
 <p>Government / Regulators / Authorities</p>	 <p>Anti-corruption</p>
 <p>Vendors / Suppliers / Business Partners</p>	

Our Sustainability Priorities

The materiality matrix

Following the materiality assessment, a materiality matrix was generated to illustrate the relative importance of material ESG topics to MTT Shipping and its stakeholders. Through this matrix, we have identified a total of four topics considered as high priority:

- Anti-Corruption
- Health and Safety
- Emissions Management
- Diversity and Equal Opportunity



Our Material ESG Topics **ENVIRONMENT**



Emissions Management

Measures taken to reduce GHG emissions through energy efficiency, improved technology and low-carbon processes.

Energy Management

Measures taken to reduce energy consumption and energy intensity in business operations.

Waste Management

Managing waste and effluents produced by our operations to reduce generation and ensure that they are disposed of/discharged in a responsible manner.

Water Management

Tracking and monitoring our water consumption and water discharge to ensure sustainable water practices.



Our Material ESG Topics

SOCIAL



Health and Safety

Measures taken to improve and maintain the safety of employees and contractors, manage critical incidents, prevent workplace accidents or injuries, and mitigate health and safety risks.

Human Rights and Labour Standards

Respecting and protecting the rights of all those associated with our operations.

Employee Management and Training

Supporting our employees to drive their own careers and fulfill their needs in terms of flexibility, training, growth and reward.

Diversity and Equal Opportunity

Promoting a diverse and inclusive workplace where every employee is treated with dignity and respect.

Community Investment

Identifying and managing direct and indirect economic impacts on the community.



Our Material ESG Topics **GOVERNANCE**



Anti-Corruption

Conducting our business based on moral principles that act as a guideline in the face of ethical dilemmas and controversial situations with controls in place to mitigate potential corruption cases.

Supply Chain Management

Building relationships and transparency throughout our supply chain and developing sustainable supply chain practices.

Data Privacy and Security

Ensuring initiatives are in place to prevent breaches of customer privacy and losses of customer data.





Corporate Social Responsibility (CSR)

Our commitment goes beyond the blue expanse. As a shipping company, we understand the importance of the human element. Our crew, our partners, and the communities where we operate are not just stakeholders; they are the heartbeats that keep our company alive. Explore with us how we invest in the well-being and development of our maritime family and the societies we touch.

Impact by numbers since 2021



> 24,000
meals distributed



> 47,000
individuals benefitted



> 400
volunteerism hours



> 2,000,000
beneficiaries impacted

A Culinary Symphony of Giving Back

Food Bank Project, Soup Kitchen Event

In an unwavering commitment to community welfare, MTT Shipping has been a beacon of compassion, mobilizing nationwide Food Bank projects since August 2021. As of September 2023, these initiatives have made a significant impact, distributing 23,560 food packs at an expenditure of RM1,780,678.00 across states such as Penang, Perak, Lembah Klang, Johor, Kuching, Sibul, Bintulu, Miri, Kota Kinabalu, Labuan, Tawau, and Sandakan. These comprehensive packs, including essential items like rice, cooking oil, and hygiene products, reached a diverse range of recipients, including low-income families, old folks homes, orphanages, OKU citizens, longhouses in Sabah and Sarawak, and flood victims. Collaborating with partners such as Food Aid Foundation, Kuching Food Aid, and Penang Community

Care, MTT Shipping's Food Bank initiatives have become a lifeline for those facing challenging times. In tandem with these efforts, MTT Shipping, in collaboration with the Food Aid Foundation, recently organized a Soup Kitchen event focused on the Lembah Klang community. With a primary goal of providing nourishing meals to welfare homes, the event saw the preparation and packing of 500 wholesome meals. Recipients included Ti-Ratana Welfare Society, PJ Caring Home, Rumah Mary, and Lighthouse Children Welfare Home. This combined effort reflects MTT Shipping's holistic approach to corporate social responsibility, sustaining hearts and homes across the nation.



Nourishing Health and Well-being

Blood Donation Drive, Mental Health Webinar, Covid-19 Crisis

Our commitment to community welfare is evident in our Blood Donation Drive, conducted in collaboration with Hospital Tengku Ampuan Rahimah Klang (HTAR) to commemorate World Blood Donor Day. Extended to colleagues, business partners, vendors, suppliers, and the general public, the event featured lucky draw prizes, MTT plush toys, and refreshments as incentives for blood donors. Recognizing the perpetual need for blood bags in Malaysia, MTT organized this event to encourage more donations and address the constant demand. Our dedication to mental health is showcased through the Mental Health Webinar, organized in collaboration with the Mental Illness Awareness and Support Association (MIASA). Open to the public and widely promoted through social media and newsletters, the webinar aimed to raise awareness and support mental health. In the fight against COVID-19, MTT Shipping has donated medical equipment and

personal protective gear, totalling RM100,000.00, to hospitals across East and West Malaysia. Items donated include coveralls, surgical gowns, oximeters, thermometers, blood pressure monitors, medical face masks, and oxygen concentrators. Beneficiaries of these contributions include Sg Buloh Hospital, Bintulu Hospital, Labuan Hospital, and various Sabah State Hospitals. Additionally, MTT Shipping temporarily provided two units of 20ft. refrigerated containers to Pusat Perubatan Universiti Malaya (PPUM), reinforcing our commitment to supporting healthcare institutions in their battle against the COVID-19 pandemic in Malaysia.





Ocean Harmony

Beach Cleanup

MTT Shipping spearheaded a beach cleaning initiative at Pantai Tanjung Batu, Bintulu, demonstrating a steadfast commitment to environmental stewardship. Despite a light drizzle, a dedicated team of 25 MTT heroes from the Bintulu branch engaged in cleaning activities from as early as 8:30 am, showcasing unwavering dedication. This initiative not only highlights our environmental responsibility but also fosters team cohesion among colleagues.



Harmony Across Generations

Education for All, PC Donation, Lions Club of Labuan Mandarin Project

The “Education for All” Campaign by MTT Shipping is an ongoing initiative aimed at making education accessible to everyone in a conducive environment. Central to this mission is the belief that education is crucial for empowerment and societal progress. MTT collaborates with schools in need across Peninsular and East Malaysia, addressing their specific requirements. Recent highlights include supporting SMK Kemayan Pahang with a donation of RM500 for a field trip for special needs students to Sarawak, aiding SJKC Chuen Min, Klang with a renovated 40ft high cube container for temporary classrooms during renovations, and sponsoring a field trip for SK Tanjung Assam in Sarawak. MTT’s contributions extend to SMK Bintulu’s E-classroom initiative, providing Samsung Smart LED TVs, supporting Buku Jalanan Chow Kit’s Storytelling & Public Speaking Competition, and addressing infrastructure issues at SMK Lutong Jalan Pantai, Miri, by sponsoring roof-fixing costs. Additionally, MTT sponsored educational materials for SMK Kinabutan, Tawau, and SK Bandar Tawau, emphasizing their commitment to creating engaging learning experiences for students in various parts of Malaysia. On top of that, through the PC Donation Project, MTT donated 102 units of second-hand PCs to various educational institutions and charity associations across Semenanjung Malaysia, Sabah, and Sarawak.

The primary goal is to provide children with resources for educational purposes, and all PCs were meticulously reformatted to ensure they were in good condition before being distributed to recipients such as Medical Awareness Camp Outreach (MACO), Pertubuhan Kebajikan Sze Bei Muar, Jireh Home, SJKC Yuk Choi, and more.

In addition to MTT Shipping’s impactful initiatives in education, our commitment extends to fostering care for the elderly in collaboration with The Lions Club of Labuan Mandarin. This non-profit international community service organization has undertaken the noble endeavour of establishing “LIONS House of Love,” a home serving as a day care centre for the elderly in Labuan. In support of this compassionate initiative, MTT Shipping sponsored the freight charges for a 20’GP container, facilitating the shipment of essential equipment and bedding to enhance the comfort and well-being of the elderly residents. This sponsorship, amounting to RM5,940.00, reflects our dedication to creating positive and nurturing environments for every generation within the community.





Autism Awareness Campaign



2021 Calendar



2022 Calendar



2023 Calendar



2024 Calendar

Timeless Impact








Annual Calendars as Catalysts for Awareness

MTT Shipping ingeniously utilizes its annual calendars as a dynamic platform to launch impactful campaigns, fostering awareness among the general public. These calendars, characterized by light and informative content presented in a storytelling style with vibrant graphics, are distributed to customers, vendors, suppliers, and business partners across Malaysia, including Port Klang, Johor, Penang, Kota Kinabalu, Tawau, Sandakan, Labuan, Kuching, Miri, Bintulu, and Sibul, as well as internationally in Thailand, Singapore, Indonesia, Labuan, Brunei, and India. Noteworthy campaigns include the 2021 Autism Awareness Campaign, titled “Understand, Accept, and Respect,” in collaboration with The National Autism Society of Malaysia (NASOM), featuring a calendar hand-drawn by a talented teenager with Autism. The 2022 Mental Health Campaign with the theme ‘How Are You?’ in partnership with the Mental Illness Awareness and Support Association (MIASA) aimed to normalize mental health and offered practical tips for daily well-being. The 2023 Blood Donation Campaign, in collaboration with Hospital Tengku Ampuan Rahimah Klang (HTAR), shed light on the constant need for blood supply in Malaysia, providing valuable information on blood donation processes, eligibility, and health benefits. Looking ahead, the 2024 calendar marks MTT’s Sustainability Journey, introducing our commitments and future initiatives, providing exposure to our sustainability and ESG efforts. These campaigns not only adorn walls but also serve as powerful instruments for spreading awareness and contributing to positive social change.

Ongoing and Future CSR Initiatives

Our Ongoing and Future CSR Initiatives

As a socially responsible organisation, our CSR initiatives align with the UN Sustainable Development Goals (UNSDGs) for positive impacts. We have ongoing projects targeting key UNSDGs and plan to launch more in the future

Our Ongoing and Future CSR Initiatives	
 <ul style="list-style-type: none"> • Food Bank Project • Soup Kitchen 	 <ul style="list-style-type: none"> • 3R Project (Reduce, Reuse, Recycling) • Donation to Charity Organisations
 <ul style="list-style-type: none"> • Medical equipment donations to rural hospitals 	 <ul style="list-style-type: none"> • Coral Planting Project • Mangrove Planting
 <ul style="list-style-type: none"> • Donation to needy schools • Director(s) sharing session at school/university 	 <ul style="list-style-type: none"> • Coral Planting Project • Mangrove Planting
 <ul style="list-style-type: none"> • Clean Water Project (install portable water filtration for rural East Malaysia) 	

Supply Chain Initiatives

Managing our supply chain is of utmost importance to us. Hence, we utilise various software systems for our business operations, which are provided by independent third-party software providers through software licensing agreements.

Sovy Customs Clearance System

- Intermediary system that facilitates connection between our Group with Royal Malaysian Customs Department for customs clearance activities.



e-Booking System

- Manages customer booking requests for container shipping services.
- Accessible through our corporate website, customers input shipment details such as container type, international commercial terms, pickup and delivery locations, etc.



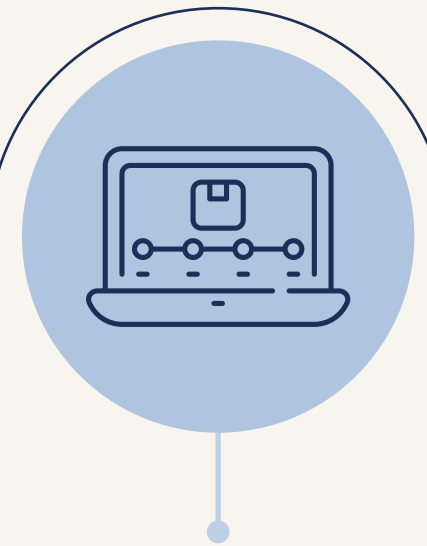
e-Shipping Instructions System

- Accessible via our corporate website, auto-generates bill of lading for customers
- Customers input details including bill of lading type, shippers' and consignees' information, notify party details, and container specifics.



e-Tracking System

- Real-time cargo or shipment location tracking via our website for customers.
- Customers track their cargo or shipment using bill of lading number, booking number, or container number.



Depot Inventory Tracking System

- Monitor and manage the containers stored in our container depots.



Driver Apps System

- Enhance and expand door delivery services in East Malaysia.
- Provides tracking visibility for MTT Shipping and customers as driver upload photos at each delivery stage.
- Convenient QR code scanning on the RoT provides details for haulier drivers.





Our Roadmap to a Sustainable Future

The Next Steps in Our Sustainability Journey

Emissions Management



SHORT-TERM (2023-2025)	MID-TERM (2026-2028)	LONG-TERM (BEYOND 2029)
<ul style="list-style-type: none"> • Establish Climate Change Policy • Establish a sustainability governance structure with Board oversight of sustainability and climate-related matters and implementation of policies • Ensure sufficient Board and employee training on emissions management • Incorporate climate responsibilities in the Board Charter • Publicly disclose Scope 1 and 2 emissions data • Consider internal assurance of Scope 1 and 2 emissions data • Begin Scope 3 calculations, particularly for business travel and employee commuting • Install solar panels on all integrated freight facilities and new office building • Explore the use of gas-powered ships 	<ul style="list-style-type: none"> • Consider external assurance of Scope 1 and 2 emissions data • Disclose Scope 3 emissions data for business travel and employee commuting • Consider internal assurance of Scope 3 emissions data, business travel and employee commuting • Identify further material Scope 3 categories and begin monitoring and calculation of emissions • Explore the use of electric trucks and electric container handling equipment for our container depots • Explore the installation of methanol-fuelled technology on ships 	<ul style="list-style-type: none"> • Publicly disclose material Scope 3 emissions data • Consider external assurance of Scope 3 emissions data • Consider undergoing a qualitative climate risk assessment to identify key physical and transition risks and opportunities • Commit to the installation of methanol-fuelled technology on ships • Continue developing strategies to align with IMO's GHG Strategy: <ul style="list-style-type: none"> - Net-zero GHG emissions by or around 2050; - 20-30% reduction of total annual GHG emissions by 2030 and 70-80% by 2040; and - Uptake of alternative zero and near-zero GHG fuels by 2030.

Note

1. Moving forward, MTT Shipping will be establishing quantitative goals and targets for key material topics as it is now still in the phase of collecting baseline data for future target-setting exercise.
2. For indicators and data that are identified for disclosure above, MTT Shipping will ensure that the disclosures are aligned with Bursa Malaysia Enhanced Sustainability Reporting Guide, Global Reporting Initiative (GRI) Standards, Greenhouse Gas Protocol (GHG Protocol) and recommendations from the Task Force on Climate-Related Financial Disclosures (TCFD).

The Next Steps in Our Sustainability Journey

SHORT-TERM (2023-2025)

MID-TERM (2026-2028)

LONG-TERM (BEYOND 2029)

Health & Safety



- Ensure continuous employee consultation, participation and communication
- Commitment to continuous improvement of health and safety practices and management system
- Establish mandatory and non-mandatory training/workshop
- Identify health and safety hotspots and common hazards within operations

- Conduct on-going training, specifically on identified hotspots and common hazards
- Consider establishing programmes for employees to access external occupational health services
- Establish training/workshops for wider business relationships
- Review and refine, if needed, the existing health and safety policy

- Consider conducting audits on key existing suppliers to ensure they have appropriate management systems in place

Diversity & Equal Opportunity



- Identify key focus areas for diversity and equal opportunity i.e. Working parents, women in the workforce, people with disabilities, etc
- Develop a strategy for the key focus areas identified
- Consider observing global awareness days such as International Women's Day and International Day for the Elimination of Racial Discrimination

- Assess diversity goals and KPIs for the key focus areas identified
- Launch the Sexual Harassment Policy
- Consider training programmes development / clear communication of diversity and equality expectation

- Conduct training to raise awareness of employees
- Conduct more in-depth training for managers and executive team to handle instances of discrimination
- If needed, review and refine Sexual Harassment Policy and the Equality and Diversity Policy

Note

1. Moving forward, MTT Shipping will be establishing quantitative goals and targets for key material topics as it is now still in the phase of collecting baseline data for future target-setting exercise.
2. For indicators and data that are identified for disclosure above, MTT Shipping will ensure that the disclosures are aligned with Bursa Malaysia Enhanced Sustainability Reporting Guide, Global Reporting Initiative (GRI) Standards, Greenhouse Gas Protocol (GHG Protocol) and recommendations from the Task Force on Climate-Related Financial Disclosures (TCFD).

The Next Steps in Our Sustainability Journey

SHORT-TERM (2023-2025)

MID-TERM (2026-2028)

LONG-TERM (BEYOND 2029)

Anti-Corruption



- Identify MTT’s Shipping existing ABC landscape, control environment and ABC related policies and procedures, guidelines and practices
- Assess ABC specific KPIs / metrics to evaluate the effectiveness of training provided, and identify key gaps in understanding
- Training programme development covering key concepts and requirements of ABC

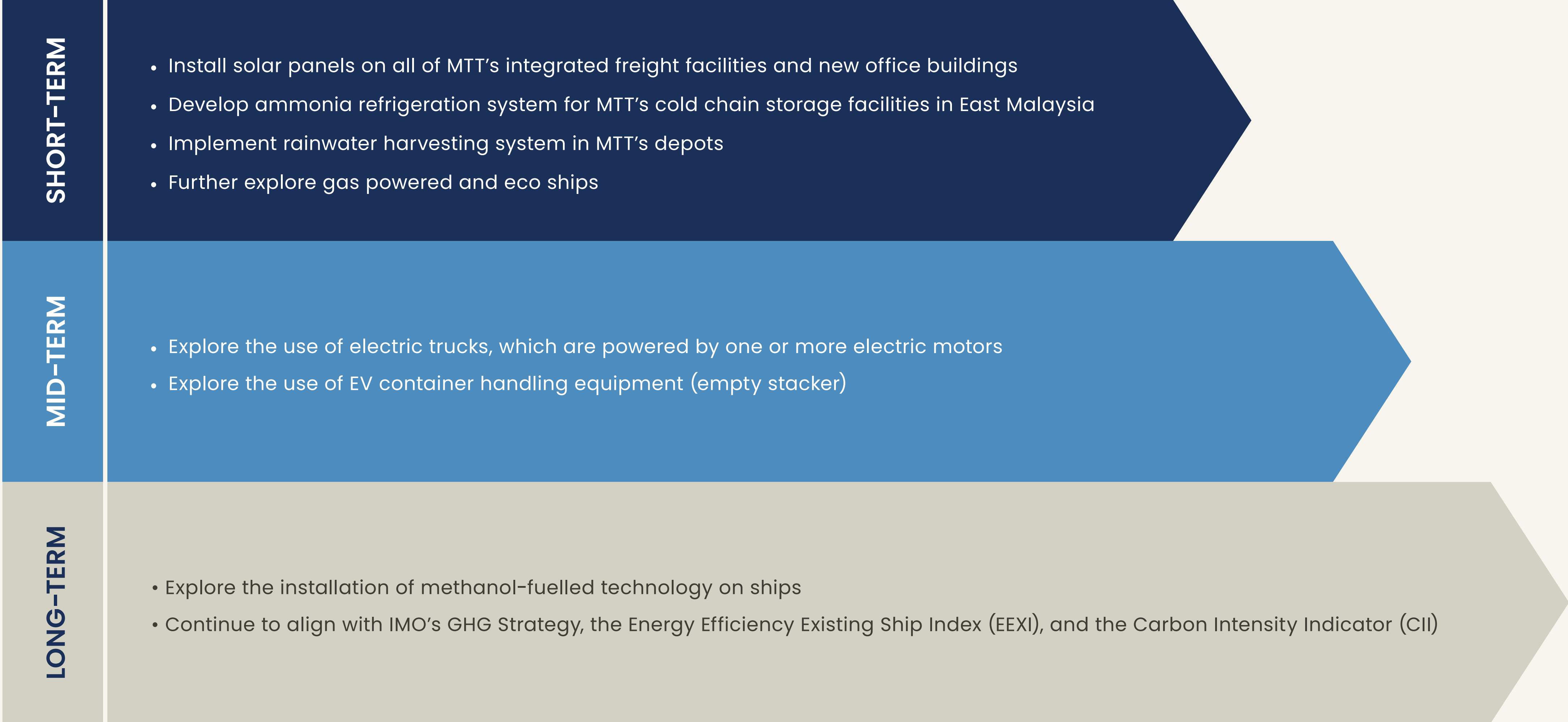
- Roll-out training to employees to create awareness on the importance of adhering to ABC requirements and updates
- Ensure annual training for employees on ABC policy and processes
- Consider enhancement of third-party management framework from ABC perspective

- Consider development of a vendor management system to ensure suppliers and business partners are aware and trained on MTT Shipping’s ABC Policy
- Consider development of a systematic approach, i.e. internal questionnaire and assessment template

Note

1. Moving forward, MTT Shipping will be establishing quantitative goals and targets for key material topics as it is now still in the phase of collecting baseline data for future target-setting exercise.
2. For indicators and data that are identified for disclosure above, MTT Shipping will ensure that the disclosures are aligned with Bursa Malaysia Enhanced Sustainability Reporting Guide, Global Reporting Initiative (GRI) Standards and recommendations from the Task Force on Climate-Related Financial Disclosures (TCFD).

Our Key Green Initiatives Moving Forward





**Our Path to a More Sustainable Future,
Where We Can Do More.**



MOVING YOUR BUSINESS FORWARD
MTTSHIPPING.COM.MY